



Oncology Pharmacy Aseptic Services Progression Pathway v1.0 (July 23)

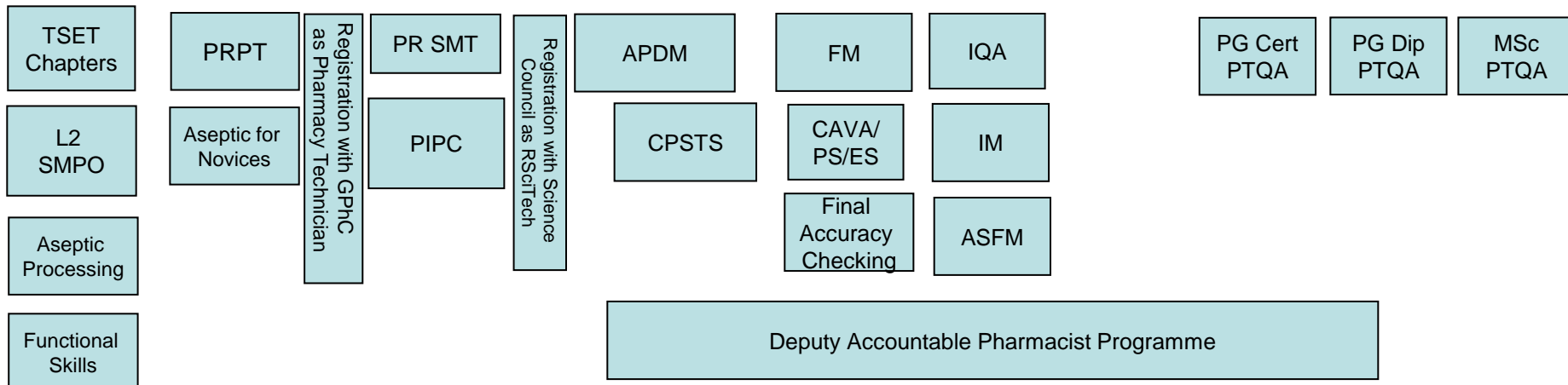
Advanced Practice

Entry Level Personnel



Knowledge and basic skill	Learn by doing and application of theory	Helping others to learn and develop	Training, assessing and mentoring	Leading, innovating and managing
---------------------------	--	-------------------------------------	-----------------------------------	----------------------------------

Band 2/3 Assistant	Band 4 Annex Technician	Band 4 Technician (SMT/PT)	Band 5 Technician (SMT/PT)	Band 6 Specialist	Band 7 Senior	Band 8 Higher
--------------------	-------------------------	----------------------------	----------------------------	-------------------	---------------	---------------



Become an NHS Ambassador

Professional Portfolio: foundation to higher level skills development

1 year Qualification	Pre-Reg Training	1-2 years Post-Reg Foundation Career Grades	3-5 years Post Reg Middle Career Grades	Over 5 years Post-Reg Advances Career Grades
----------------------	------------------	---	---	--



Oncology Pharmacy Clinical Services Progression Pathway v1.0 (July 23)

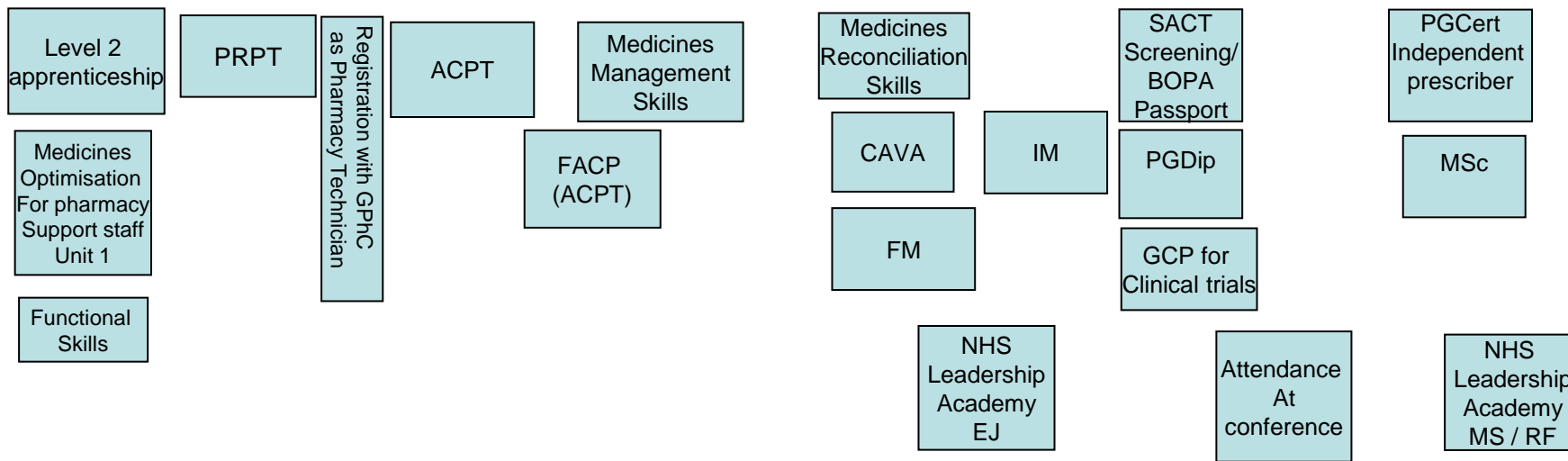
Advanced
Practice

Entry
Level
Personnel



Knowledge and basic skill	Learn by doing and application of theory	Helping others to learn and develop	Training, assessing and mentoring	Leading, innovating and managing
---------------------------	--	-------------------------------------	-----------------------------------	----------------------------------

Band 2/3 Assistant	Band 4 Annex Technician	Band 4 Technician	Band 5 Technician	Band 6 Specialist	Band 7 Senior	Band 8 Higher
--------------------	-------------------------	-------------------	-------------------	-------------------	---------------	---------------



Professional Portfolio: foundation to higher level skills development

Become an NHS Ambassador

1 year Qualification	Pre-Reg Training	1-2 years Post-Reg Foundation Career Grades	3-5 years Post Reg Middle Career Grades	Over 5 years Post-Reg Advances Career Grades
----------------------	------------------	---	---	--