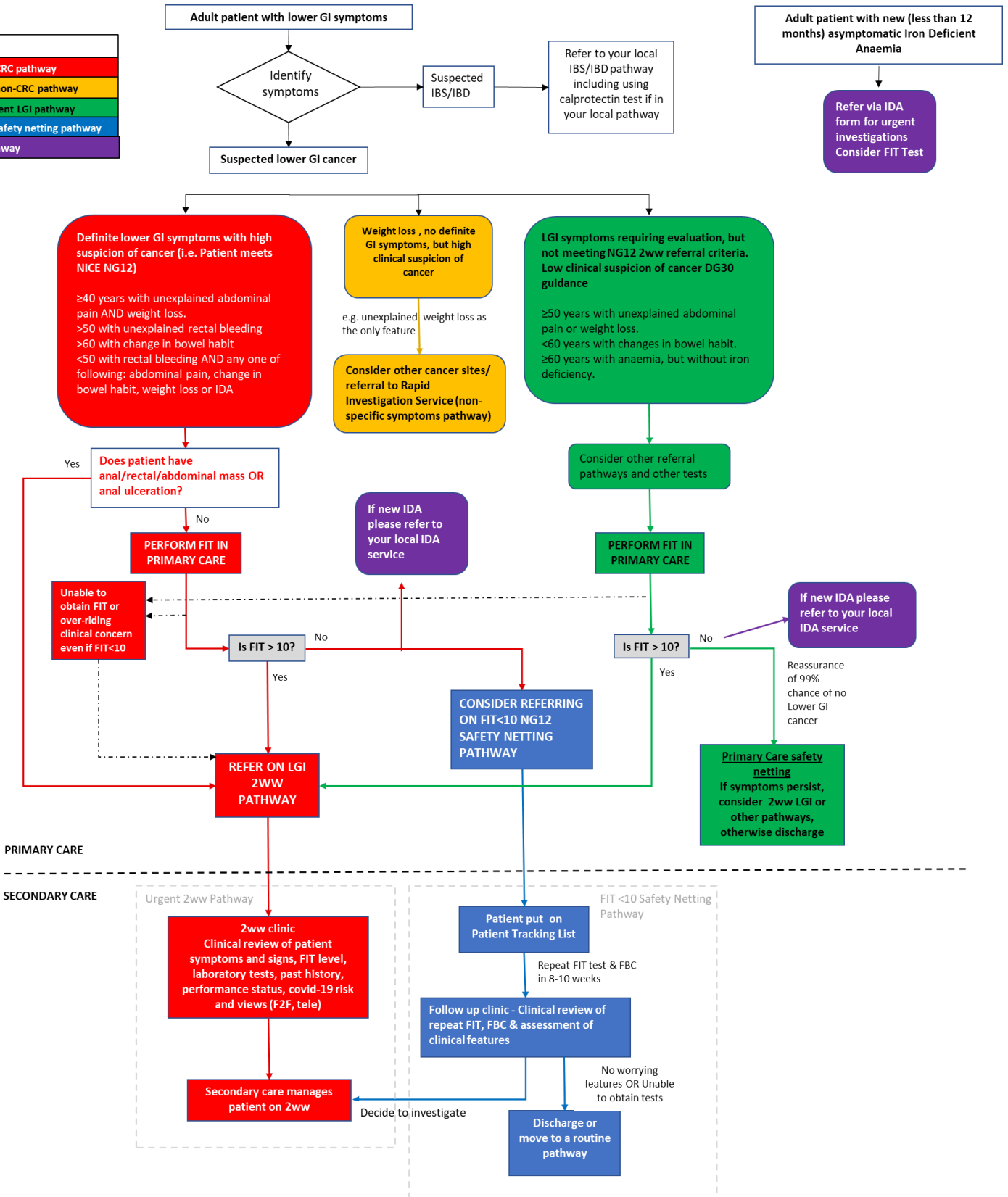


Dorset LGI Pathway

KEY
Urgent CRC pathway
Urgent non-CRC pathway
Non-urgent LGI pathway
FIT<10 safety netting pathway
IDA pathway



Adult patient with new (less than 12 months) asymptomatic Iron Deficient Anaemia

Refer via IDA form for urgent investigations
Consider FIT Test

PRIMARY CARE

SECONDARY CARE

Urgent 2ww Pathway

2ww clinic
Clinical review of patient symptoms and signs, FIT level, laboratory tests, past history, performance status, covid-19 risk and views (F2F, tele)

Secondary care manages patient on 2ww

FIT <10 Safety Netting Pathway

Patient put on Patient Tracking List

Repeat FIT test & FBC in 8-10 weeks

Follow up clinic - Clinical review of repeat FIT, FBC & assessment of clinical features

No worrying features OR Unable to obtain tests → **Discharge or move to a routine pathway**

Decide to investigate → **Secondary care manages patient on 2ww**