

## Raising awareness and reducing the stigma of cancer in Black, Asian and Ethnic minority communities.

### Overview:

Cancer incidence among Black, Asian and minority ethnic groups needs to be reduced. Many communities in the UK, still see cancer as a taboo subject and prefer not to speak about it. Our goal for this campaign, during Black History Month, is to unravel some of the stigma, understand the reasons for these barriers to accessing help and making sure we provide communities with the tools and awareness; to know when they need to seek medical assistance. Cancer and cancer treatments have changed significantly in the past number of years and there needs to be a shift in the attitudes towards cancer, so that people can get the care they need and live a better quality of life, after their cancer diagnosis.

### Campaign support

This toolkit includes campaign messages, long and short copy and suggested social media posts as well as a suite of resources, links to further information and cancer advice; to help you support the campaign.

We ask that ICS, Primary Care and Trust teams as well as voluntary organisations and community groups across Wessex, support us delivering this message to the public and would welcome any feedback about the usefulness of this toolkit.

We will be sharing information through our communication channels as per below:

Cancer Matters Wessex website: <https://cancermatterswessex.nhs.uk/lets-talk-about-cancer/>

Cancer Matters Wessex social media – twitter (@CancerWessex)

Wessex Cancer Alliance social media: Twitter/LinkedIn and YouTube

Wessex Cancer Alliance stakeholder bulletin

## Key Messages

Primary messages of this campaign:

- There is a lack of health education regarding cancer and awareness of the availability of support services is limited among black and minority ethnic communities
- Many BAME communities in the UK see cancer as a taboo subject and prefer not to speak about it.
- There is a higher incidence of certain cancers in black and minority ethnic communities and the general incidence of cancer in these communities is rising.
- Patients who are members of black and minority ethnic groups report more negative experiences of cancer care than white ethnic groups

Secondary Messages:

- Cancer screening programmes help prevent cancer
- Cancer can be easier to treat if it's diagnosed early – sometimes members of black and minority ethnic communities can present later than people from other communities.
- Grants are available from Communities Against Cancer – which supports organisations and individuals to raise awareness of cancer within their own communities.

## Facts/Stats:

- 1) 1 in 4 black men will get **prostate cancer** in their lifetime. Black men are more likely to get prostate cancer than other men, who have a 1 in 8 chance of getting prostate cancer. [\(Source\)](#)
- 2) Late stage at diagnosis for **breast cancer** in England is more common in Black African (25%) and Black Caribbean adults (22), compared to White British adults (13%) (PHE 2016 statistics)
- 3) 79% of **lung cancer** cases in the UK are preventable & 72% of lung cancer cases are caused by smoking.
- 4) Around 630 cases of **bowel cancer** each year in males in England are linked with deprivation. 54% of cases are preventable

5) Incidence rates for **cervical cancer** in the UK are highest in females aged 30 to 34 (CRUK 2015-2017)

## Long/Short copy

Below are some examples of short and longer copy that you could use when communicating with audiences about the campaign. Please use the copy for any newsletters, emails or other materials, including websites, e-bulletins, press releases and social media.

### Short Copy:

This Black History Month, we will shine a light on the inequalities that people from Black, Asian and Ethnic Minority communities can face when it comes to cancer. The campaign aims to unravel some of the stigma, understand the reasons for these barriers and provide people with the awareness, tools and access to support to make informed decisions about their health.

Find out more here <https://cancermatterswessex.nhs.uk/lets-talk-about-cancer/>

### Long Copy:

This Black History Month, we will shine a light on the inequalities that people from Black, Asian and Ethnic Minority communities can face when it comes to cancer.

There is an alarming disparity in the incidence of some cancers in BAME communities and other communities. For example, Black men are [twice as likely](#) to develop prostate cancer in their lifetime than other men.

Patients from BAME communities also report more negative experiences of cancer care than other groups. In [Black Women Rising's 100 Women Survey](#), which looked at potential inequalities for women of colour diagnosed with breast cancer, 74% of the women who use a softie (a prosthetic breast or nipple) were not offered one to match their skin tone. The survey also found that 46% of women were told "I don't think it's cancer" by healthcare professionals.

Many BAME communities in the UK see cancer as a taboo subject and prefer not to speak about it. In a recent [review of literature on Breast Screening](#), Wessex Voices found evidence to support this: 'Most African people don't like to talk about...cancer. They see it as a taboo, in fact, I know a lot of people who do not even say the word cancer'. These views can lead to patients from those communities delaying going to their GP if they have concerns - which means that if it is cancer, it can be more difficult to treat.

The campaign aims to unravel some of the stigma, understand the reasons for these barriers and provide people with the awareness, tools and access to support to make informed decisions about their health.

Find out more here <https://cancermatterswessex.nhs.uk/lets-talk-about-cancer/>

## Social Media

Please help us get the message out there by using your social media channels from the 30/09/2021 to support the campaign. Please see below some suggested social posts to be used in support of the campaign and follow us on Twitter for more posts throughout October:


### **Twitter:**

Twitter handles to tag: @CancerWessex | @NHS\_WCA | @WessexVoices | @CancerDorset

- Let's talk about cancer this Black History Month. Some cancers are more common in Black, Asian and ethnic minority communities and we need to raise awareness to help diagnose more cancers earlier <https://cancermatterswessex.nhs.uk/lets-talk-about-cancer/> #letstalkaboutcancer #BlackHistoryMonth #canceraware
- Black Women Rising supports Black cancer patients & showcases inequalities BAME communities face. Their 100 Women Survey highlights potential inequalities for women of colour diagnosed with [blackwomenrisinguk.org/100-women-survey](https://blackwomenrisinguk.org/100-women-survey) #BlackHistoryMonth #BreastCancerAwarenessMonth
- If you have a cervix and are between 25-64, you'll receive an invite to a cervical screening (or smear test) every 3 to 5 years. So, what happens at a screening? Learn more from @JoTrust: [youtube.com/watch?v=Z-dDRgXdhgk](https://www.youtube.com/watch?v=Z-dDRgXdhgk) #letstalkaboutcancer #cervicalcancer #SmearTestsSaveLives
- Human papillomavirus (HPV) is a common virus that most of us will have at some point in our lives but 13 types of HPV are linked to cancer. The HPV vaccine helps lower risk of developing HPV-related cancers and conditions. Find out more: [jostrust.org.uk/information/hpv-vaccine](https://jostrust.org.uk/information/hpv-vaccine) @JoTrust
- Check out the You CANcervive podcast; developed by patients, for patients. In this episode, Arzoo & Julie bust some of the myths surrounding cervical cancer & smear tests while reminding you of the benefits of early cancer diagnosis. Listen here: [audioboom.com/posts/7942828-smears-vs-cancer-fears](https://audioboom.com/posts/7942828-smears-vs-cancer-fears)
- Let's talk about breast cancer. How #canceraware are you about the common signs & symptoms of breast cancer? @CoppaFeelPeople explain more & give you some handy tips on how to check your boobs/pecs/chest: [vimeo.com/298985447#letstalkaboutcancer](https://vimeo.com/298985447#letstalkaboutcancer) #breastcancerawarenessmonth
- A breast screening (or mammogram) aims to find breast cancers early when they have the best chance of being cured. If eligible, you'll receive a letter inviting you to attend an appointment. For more info about what happens at a screening: [cancerresearchuk.org/about-cancer/breast-cancer/getting-diagnosed/screening/breast-screening](https://cancerresearchuk.org/about-cancer/breast-cancer/getting-diagnosed/screening/breast-screening) @CR\_UK
- Communities Against Cancer is a project designed to help communities work together to raise awareness of cancer. Up to £5k available to support your organisation – find out how to apply here: <https://tinyurl.com/4k493smk>

### **Facebook:**

General	
---------	--

	<p>Let's talk about cancer this Black History Month.</p> <p>In some communities:</p> <ul style="list-style-type: none"> <li>☞ certain cancers are more common</li> <li>☞ rates of cancer are rising</li> <li>☞ patients report more negative experiences of cancer care</li> <li>☞ the lack of diversity in media and charity campaigns fuel cultural myths that “cancer doesn't affect black people”</li> </ul> <p>#letstalkaboutcancer #BlackHistoryMonth #canceraware</p>
General	<p>Communities Against Cancer is a project designed to help communities work together to raise awareness of cancer. Up to £5k available to support your organisation – find out how to apply here: <a href="https://tinyurl.com/4k493smk">https://tinyurl.com/4k493smk</a></p> 
Cervical cancer	<p>Let's talk about cervical cancer.</p> <p>Symptoms are not always obvious, but can include bleeding that's unusual for you, changes to discharge, pain or discomfort during sex and unexplained pain in your lower back or pelvis.</p> <p>Find out more from @JoTrust: <a href="https://www.youtube.com/watch?v=kBq8iaEzm3U">youtube.com/watch?v=kBq8iaEzm3U</a></p>

<p>Cervical cancer BAME cancer awareness Screening</p>	<p>#letstalkaboutcancer #cervicalcancer #canceraware</p> <p>If you have a cervix and are between 25-64, you'll receive an invite to a cervical screening (or smear test) every 3 to 5 years. So, what happens at a screening?</p> <p>Learn more from @JoTrust: <a href="https://www.youtube.com/watch?v=Z-dDRgXdhgk">youtube.com/watch?v=Z-dDRgXdhgk</a></p> <p>#letstalkaboutcancer #cervicalcancer #SmearTestsSaveLives</p>
<p>Cervical cancer Cancer awareness Cancer prevention</p>	<p>What's the HPV vaccine and what's it got to do with cervical cancer?</p> <p>Human papillomavirus (HPV) is a common virus that most of us will have at some point in our lives – but 13 types of HPV are linked to cancer, including cervical cancer. The HPV vaccine helps to protect against these high-risk types of the virus and can put people at lower risk of developing HPV-related cancers and conditions.</p> <p>Find out more about HPV, and the HPV vaccine here: <a href="https://www.jostrust.org.uk/information/hpv-vaccine">jostrust.org.uk/information/hpv-vaccine</a></p> <p>@JoTrust</p> <p>#letstalkaboutcancer #cervicalcancer #cancerawareness</p>



<p>Cervical cancer Cancer awareness Cervical screening</p>	<p>Have a listen to the CANcervive podcast. In this episode Arzoo and Julie bust some of the myths surrounding cervical cancer and smear tests while reminding you of the benefits of early cancer diagnosis.</p> <p>Listen here: <a href="https://audioboom.com/posts/7942828-smears-vs-cancer-fears">audioboom.com/posts/7942828-smears-vs-cancer-fears</a></p> <p>@YorkshireCancerCommunity</p> <p>#letstalkaboutcancer #cervicalcancer #patientvoice</p>
<p>Cervical cancer Cancer support</p>	<p>It's important to attend screenings when invited and talk to your GP (face-to-face, telephone or via e-consult) if you have concerns.</p> <p>If you're worried about cervical cancer, here are a few sources of information and support:</p>

@JoTrust  
@ macmillancancer  
@cancerresearchuk  
@eveappeal  
  
#letstalkaboutcancer #cancersupport #cervicalcancer



Breast cancer

Let's talk about breast cancer.  
  
How #canceraware are you about the common signs and symptoms of breast cancer?  
  
@coppafeel.org explain more and give you some handy tips on how to check your boobs/pecs/chest: [vimeo.com/298985447](https://vimeo.com/298985447)  
  
#letstalkaboutcancer #breastcancer #canceraware #breastcancerawarenessmonth

Breast cancer  
Screening

We know going for a screening isn't always pleasant. For some it can be painful, uncomfortable, embarrassing, or pose sensitive cultural or religious challenges. A breast screening (or mammogram) aims to find breast cancers early, when they have the best chance of being cured.

If you're eligible, you'll receive a letter inviting you to attend an appointment.

Find out more about what happens at a screening here: [cancerresearchuk.org/about-cancer/breast-cancer/getting-diagnosed/screening/breast-screening](https://cancerresearchuk.org/about-cancer/breast-cancer/getting-diagnosed/screening/breast-screening)

@cancerresearchuk

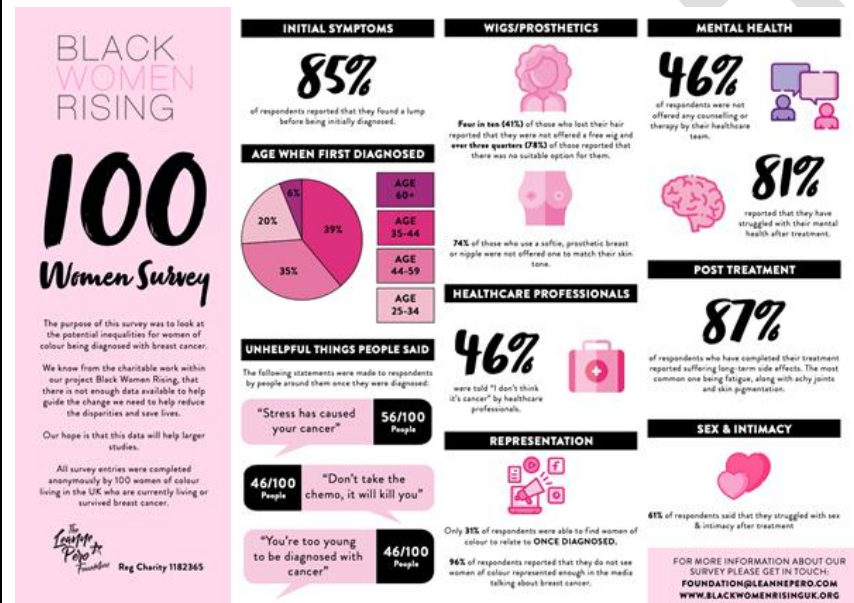


Breast cancer

Black Women Rising supports Black cancer patients and survivors and showcases the inequalities BAME Communities face when it comes to cancer.

Their 100 Women Survey looks at the potential inequalities for women of colour diagnosed with breast cancer: [blackwomenrisinguk.org/100-women-survey](http://blackwomenrisinguk.org/100-women-survey)

#letstalkaboutcancer #breastcancer #BlackHistoryMonth #breastcancerawarenessmonth



Breast cancer  
BAME cancer awareness  
Stories

"I put off seeing a doctor because I believed that breast cancer was incurable".

Meet Lorraine, who is helping to educate others on breast cancer in this article from @breastcancer now: [breastcancer.org/about-us/news-personal-stories/i-put-seeing-doctor-because-i-believed-breast-cancer-was-incurable](http://breastcancer.org/about-us/news-personal-stories/i-put-seeing-doctor-because-i-believed-breast-cancer-was-incurable)

#letstalkaboutcancer #breastcancer #BlackHistoryMonth #breastcancerawarenessmonth

<p>BAME cancer awareness</p>	<p>Black Women Rising address some of the unhelpful myths and taboos that can prevent people from the BAME community accessing help and support if they are concerned about cancer.</p> <p>Listen to The Untold Cancer Stories Podcast – Cancer’s Cultural Myths and Taboos here:  <a href="https://anchor.fm/blackwomenrising/episodes/Black-Women-Rising--The-Untold-Cancer-Stories-EP-3--Cancers-Cultural-Myths-and-Taboos-ee0hg">https://anchor.fm/blackwomenrising/episodes/Black-Women-Rising--The-Untold-Cancer-Stories-EP-3--Cancers-Cultural-Myths-and-Taboos-ee0hg</a></p> <p>See more from Black Women Rising on Instagram or at <a href="http://blackwomenrisinguk.org">blackwomenrisinguk.org</a></p> <p>#letstalkaboutcancer #BlackHistoryMonth #cancerawareness</p>
<p>BAME cancer awareness Cancer support</p>	<p>Black Women Rising run support groups for Black women experiencing a cancer diagnosis. For more information, visit:  <a href="http://blackwomenrisinguk.org/support-groups">blackwomenrisinguk.org/support-groups</a></p> <p>#letstalkaboutcancer #BlackHistoryMonth #cancerawareness</p>
<p>Breast cancer Cancer support</p>	<p>You know your body better than anyone – check yourself regularly and talk to your GP (face-to-face, by telephone or via e-consult) if you notice anything that’s unusual for you. Attending screenings when invited are the best way to spot cancers early.</p> <p>If you’re worried about breast cancer, here are some useful sources of support:</p> <p>@ macmillancancer  @cancerresearchuk  @breastcancer now  @coppafeelpeople</p> <p>#letstalkaboutcancer #cancersupport #breastcancer</p>



Bowel cancer

Let's talk about bowel cancer.

Common symptoms can include a change in bowel habit, blood in your poo, abdominal pain discomfort or bloating after eating, unexplained weight loss, extreme tiredness, or a pain or lump in your tummy.

@bowelcanceruk takes you through some key facts: [youtube.com/watch?v=eFIL5T0xcg8&t](https://www.youtube.com/watch?v=eFIL5T0xcg8&t)

#letstalkaboutcancer #bowelcancer #cancerawareness

Bowel cancer prevention

Bowel cancer is the 4<sup>th</sup> most common cancer in the UK. However, it's believed that around half of all bowel cancers can be prevented by having a healthier lifestyle.

What can you do to #reduceyourrisk?

[bowelcanceruk.org.uk/about-bowel-cancer/risk-factors/reducing-your-risk](https://www.bowelcanceruk.org.uk/about-bowel-cancer/risk-factors/reducing-your-risk)

	<p>@bowelcanceruk #letstalkaboutcancer #bowelcancer #cancerawareness</p>
Bowel cancer Screening	<p>How does bowel cancer screening work?</p> <p>@bowelcanceruk explain the at home test (also called a FIT test) for bowel cancer: <a href="https://www.youtube.com/watch?v=Esm_WRXwWBY&amp;t">youtube.com/watch?v=Esm_WRXwWBY&amp;t</a></p> <p>#letstalkaboutcancer #canceraware #bowelcancer</p>
Bowel cancer Support	<p>Bowel cancer is most common in people in their 60s and 70s – but can develop at any age. If you've experienced symptoms and you're worried it might be bowel cancer, contact your GP (face-to-face, by telephone or via e-consult).</p> <p>You might also like to look at:</p> <p>@ macmillancancer @cancerresearchuk @bowelcanceruk</p> <p>#letstalkaboutcancer #bowelcancer #cancerawareness</p>



Cancer diagnosis  
Rapid investigation  
service  
Wessex

Do you know about the Wessex Rapid Investigation Service (RIS)? It's a new service for people in Hants, Dorset and IOW.

If you have symptoms that are difficult to diagnose, but may suggest cancer – your GP can refer you to the rapid investigation service. The RIS clinical team can quickly arrange tests to make or exclude a cancer diagnosis.

Find out more: [cancermatterswessex.nhs.uk/rapid-investigation-service/](https://cancermatterswessex.nhs.uk/rapid-investigation-service/)  
@cancermatterswessex

#letstalkaboutcancer #canceraware

Prostate cancer  
Cancer awareness

Let's talk about prostate cancer.

Prostate cancer doesn't always have symptoms, which can mean that it can be difficult to spot. However, if you notice any changes to your body, however subtle – it's always a good idea to talk things through with your GP (face-to-face, by telephone or via e-consult).

	<p>Find out more about prostate cancer from @prostatecancerUK: <a href="http://prostatecanceruk.org/prostate-information/about-prostate-cancer">prostatecanceruk.org/prostate-information/about-prostate-cancer</a></p> <p>#letstalkaboutcancer #prostatecancer #canceraware</p>
<p>Prostate cancer BAME cancer awareness</p>	<p>Let's talk about prostate cancer.</p> <p>1 in 4 Black men will get prostate cancer in their lifetime, and are twice as likely to get prostate cancer than other men. If they have symptoms, Black men are less likely to act on them and visit their doctor.</p> <p>Find out about the work we are doing with and for Black men to raise awareness of this heightened risk: <a href="http://cancermatterswessex.nhs.uk/prostate-cancer-campaign/">cancermatterswessex.nhs.uk/prostate-cancer-campaign/</a></p> <p>#letstalkaboutcancer #BlackHistoryMonth #prostatecancer #cancerawareness</p> 

<p>Prostate cancer story BAME cancer awareness</p>	<p>“In the black community, especially Afro-Caribbeans, a lot of men shy away from talking about medical issues. But prostate cancer affects one in four black men, so awareness is important”.</p> <p>Read Gilly’s story from @prostatecanceruk: <a href="http://prostatecanceruk.org/prostate-information/further-help/real-life-stories/gilly-morgan">prostatecanceruk.org/prostate-information/further-help/real-life-stories/gilly-morgan</a></p> <p>#letstalkaboutcancer #BlackHistoryMonth #prostatecancer #cancerawareness</p>
<p>Prostate cancer story BAME cancer awareness</p>	<p>“Do you know what's going on in your own inside? Men need to talk about it even if they don't want to”.</p> <p>Meet Errol, who was diagnosed with prostate cancer in 2010 and encourages men to talk about their health and get checked: <a href="http://theerolmckellarfoundation.com/errol-mckellar/errol-s-story.html">theerolmckellarfoundation.com/errol-mckellar/errol-s-story.html</a></p> <p>#letstalkaboutcancer #BlackHistoryMonth #prostatecancer #cancerawareness</p>
<p>Prostate cancer screening</p>	<p>Men aged 45 and over, who are Black and have a family history of prostate cancer, are most at risk of getting prostate cancer themselves. We recommend you have a PSA test so your GP can check your risk. A PSA Test is a blood test that your GP can carry out on request. Call your GP today and book an appointment.</p> <p>For more information about the PSA test and Prostate cancer, please visit <a href="http://prostatecanceruk.org">prostatecanceruk.org</a></p>



Prostate cancer  
BAME cancer awareness

Prostate cancer can be difficult to talk about. Stigma, embarrassment and taboo and prevent men from the BAME Community accessing help.

Listen to this podcast from Black Men Rising: [anchor.fm/blackwomenrising/episodes/Black-Men-Rising---TheUntold-Cancer-Stories--Ep-5-Lets-Talk-About-Prostate-Cancer-em35c5](https://anchor.fm/blackwomenrising/episodes/Black-Men-Rising---TheUntold-Cancer-Stories--Ep-5-Lets-Talk-About-Prostate-Cancer-em35c5)

See more from Black Men Rising on Instagram [@blackmenrisinguk](https://www.instagram.com/blackmenrisinguk) or at [blackwomenrisinguk.org/](https://blackwomenrisinguk.org/)

#letstalkaboutcancer #BlackHistoryMonth #prostatecancer #cancerawareness

Prostate cancer  
Cancer support

1 in 4 black men will get prostate cancer in their lifetime and are at a higher risk from a younger age. You should have a PSA test to check your risk if; you are 45+ and have a history of prostate cancer in the family. If you're worried about prostate cancer, contact your GP (face-to-face, by telephone or via e-consult).

You might also like to look at:

@ macmillancancer

@cancerresearchuk  
@prostatecanceruk  
@orchidfightingmalecancer

#letstalkaboutcancer #prostatecancer #cancerawareness



## Images/Materials and resources

Below are links to some of the imagery that we would like to be used to support this campaign and links to useful resources, such as videos and websites, with additional information for the public.

Website	<a href="https://cancermatterswessex.nhs.uk/lets-talk-about-cancer/">cancermatterswessex.nhs.uk/lets-talk-about-cancer/</a>
Video	<b>Video from Della - to follow</b>
Video	<b>Video from Duke – to follow</b>
Video	<b>Video from Hugh – to follow</b>
Videos	<b>Cancer Matters Wessex Video Library</b> <a href="https://cancermatterswessex.nhs.uk/videos/?page=7">https://cancermatterswessex.nhs.uk/videos/?page=7</a>
Podcast	<b>You Cancervive Podcast Series</b> <a href="https://audioboom.com/channels/5056192">https://audioboom.com/channels/5056192</a>
Podcast	<b>Black Women Rising and Black Men Rising Podcasts</b> <a href="https://anchor.fm/blackwomenrising">https://anchor.fm/blackwomenrising</a>
Report	<b>Macmillan - Experiences of BME People affected by cancer</b> <a href="https://www.macmillan.org.uk/documents/aboutus/research/inclusionprojects/experiencesofbmepeople.pdf">https://www.macmillan.org.uk/documents/aboutus/research/inclusionprojects/experiencesofbmepeople.pdf</a>
Report	<b>Race Equality Foudation – Cancer and black minority ethnic communities</b> <a href="https://raceequalityfoundation.org.uk/health-care/cancer-and-black-and-minority-ethnic-communities/">https://raceequalityfoundation.org.uk/health-care/cancer-and-black-and-minority-ethnic-communities/</a>
Report/Poster	<b>Wessex Voices – People's experiences of breast screening</b> <a href="https://bit.ly/wvbreastscreeningfull">https://bit.ly/wvbreastscreeningfull</a>
Report	National Cancer Patient Experience Survey <b>Publication expected in Autumn 2021</b>
Video (Internal Communications to Staff)	<b>Bias, Communication, Dignity</b> <a href="https://www.england.nhs.uk/blog/reducing-inequalities-bme-cancer-care/">https://www.england.nhs.uk/blog/reducing-inequalities-bme-cancer-care/</a>
Links (Cervical Cancer)	<b>Jo's Cervical Cancer Trust</b> - <a href="https://www.jostrust.org.uk/">https://www.jostrust.org.uk/</a> <b>The Eve Appeal</b> - <a href="https://eveappeal.org.uk">https://eveappeal.org.uk</a>
Links (Breast Cancer)	<b>CoppaFeel</b> - <a href="https://coppafeel.org/">https://coppafeel.org/</a> <b>Breast Cancer Now</b> - <a href="https://breastcancernow.org/">https://breastcancernow.org/</a>
Links (Bowel Cancer)	<b>Bowel Cancer UK</b> - <a href="https://www.bowelcanceruk.org.uk/">https://www.bowelcanceruk.org.uk/</a>
Links	<b>Prostate Cancer UK</b> - <a href="https://prostatecanceruk.org/">https://prostatecanceruk.org/</a>

(Prostate Cancer)	<b>Orchid</b> - <a href="https://orchid-cancer.org.uk/">https://orchid-cancer.org.uk/</a>
Links (General Cancer Support/Info/Advice)	<b>Cancer Research UK</b> - <a href="https://www.cancerresearchuk.org/">https://www.cancerresearchuk.org/</a> <b>Macmillan</b> - <a href="https://www.macmillan.org.uk/">https://www.macmillan.org.uk/</a>
Links (Local support)	<b>Cancer Matters Wessex</b> - <a href="https://cancermatterswessex.nhs.uk/">https://cancermatterswessex.nhs.uk/</a> <b>Cancer Care Map UK</b> - <a href="https://www.cancercaremap.org/">https://www.cancercaremap.org/</a> <b>Communities Against Cancer</b> - <a href="https://actionhampshire.org/what-we-do/projects/communities-against-cancer/">https://actionhampshire.org/what-we-do/projects/communities-against-cancer/</a>
Link	<b>Rapid investigation service:</b> <a href="https://cancermatterswessex.nhs.uk/rapid-investigation-service/">https://cancermatterswessex.nhs.uk/rapid-investigation-service/</a>
Link/Report	Quality of Life survey - to follow
Link	<b>B'Me Against Cancer:</b> <a href="https://www.bmecancer.com/index.php">https://www.bmecancer.com/index.php</a>
Link	Communities Against Cancer : <a href="https://actionhampshire.org/what-we-do/projects/communities-against-cancer/">https://actionhampshire.org/what-we-do/projects/communities-against-cancer/</a>