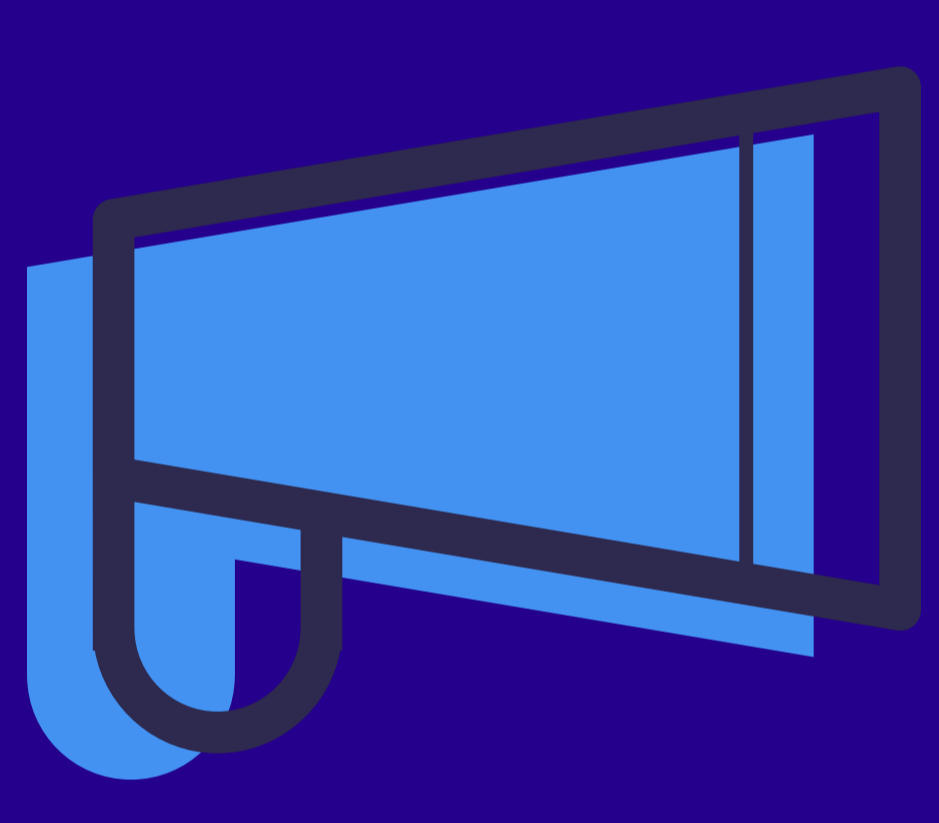
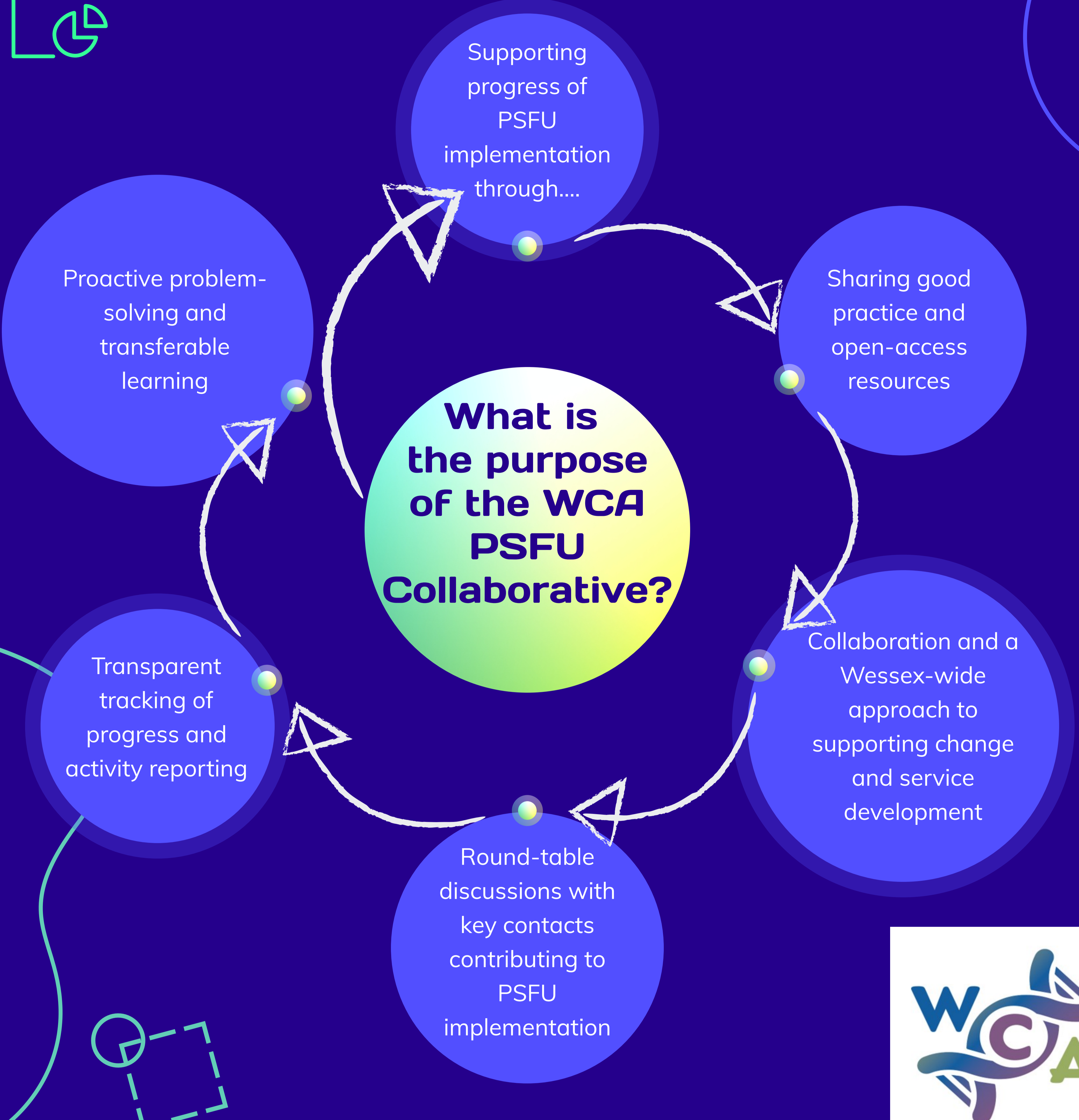
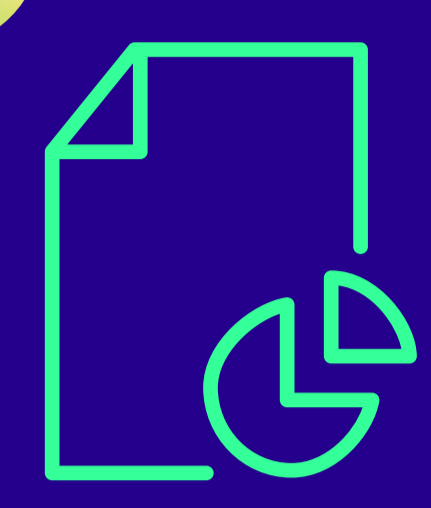


Wessex Cancer Alliance Personalised Stratified Follow Up (PSFU) Collaborative

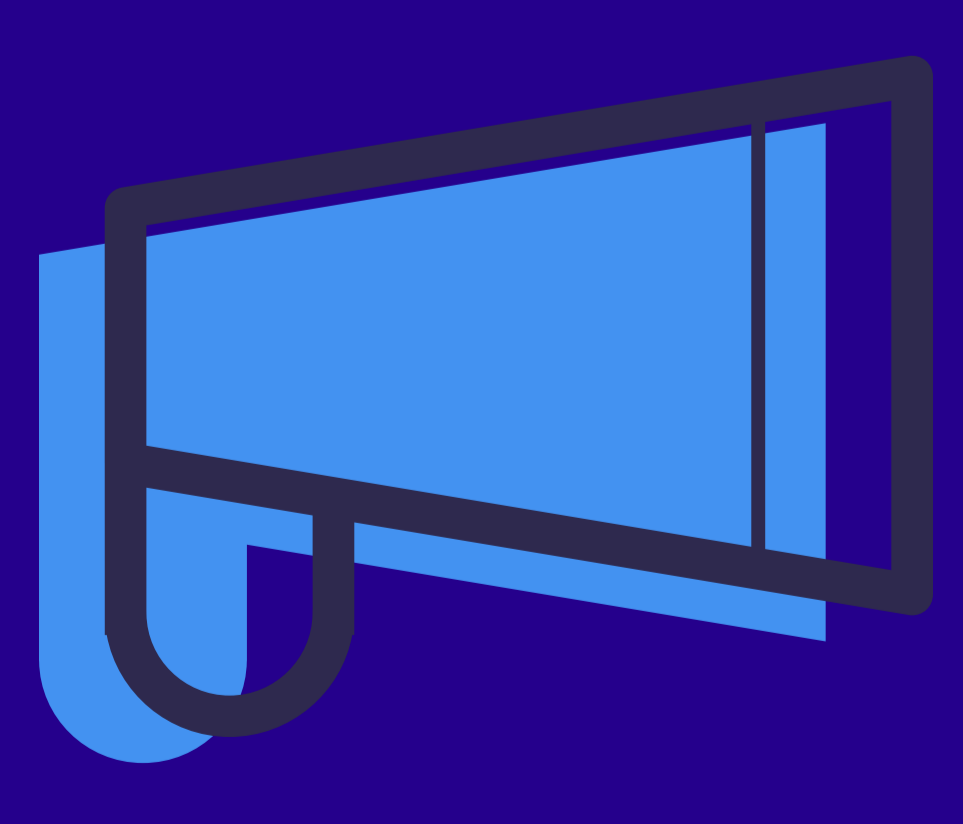
Launching:
Tuesday 17th August 2021
1-3pm



PSFU Collaborative Agenda

AGENDA

13:00	Welcome and introductions	Jane Winter
13:05	Purpose of WCA PSFU Collaborative -Terms of Reference -Where are we currently: -National/Local Ambitions for PSFU 21-22	Steph Heath Programme Manager for Personalised Care WCA Cancer Managers/Lead Cancer Nurses (all Trusts)
13:20	Progressing the next phase of PSFU implementation - Embedding Breast Prostate & Colorectal -Dorset: Testicular, Thyroid, Gynae, Lymphoma - HIOW: Lymphoma, Haematology, Endometrial, Thyroid	Discussion (all) Steph Heath Hazel Hardyman – Dorset Cancer Partnership PSFU Lead Matt Williams Programme Manager – ICS Digital Outpatients Programme
13:35	Developing PSFU Pathways – implementation in practice	Claire Marsh UHS PSFU Clinical Nurse Specialist
14:20	Cancer Support Worker and Sustainable PSFU - Case for Change Report	Catherine Neck Commissioning Support Unit
14:50	Cancer Matters Wessex Website and PSFU	Hazel Hardyman
14:55	AOB/Date and time of next meeting	
15:00	Meeting close	



PSFU Collaborative Who should join?

We are launching this Collaborative for anyone involved in progressing the implementation and delivery of PSFU in cancer services - this may include: clinical teams, IT teams supporting the development/integration of RMS systems, project managers/transformation teams, Cancer Service Managers and leads and Trust PIFU leads.

To join this and future meetings please contact:
england.wessexcanceralliance@nhs.net