

Wessex Cancer Alliance Patient, Carer and Public Involvement Network



Get involved in making
cancer services better

Wessex Voices

local healthwatch
working together

NHS
England

What is the involvement network?



There are big plans to make cancer services and support better in Dorset, Hampshire and the Isle of Wight.



Wessex Cancer Alliance Patient, Carer and Public Involvement Network is

- for people who want to be involved in making these services better
- the best way to hear about these services

Who can join the involvement network?

Anyone can join the network including:



- patients, carers and family members
- people from Dorset, Hampshire and the Isle of Wight
- people from different ages, backgrounds and experiences

What support will I get?



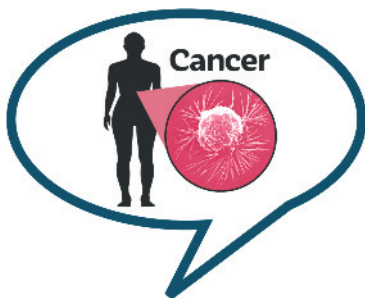
We want to support you. We want to make sure you know what we are asking you to do.



How can we help you join in? We can:

- make our information in Easy Read
- pay your expenses for example travel costs
- help you to join online meetings

What can I get involved in?



You could:

- share your experiences of cancer services and tests
- tell us what you think about cancer information
- come to meetings about cancer projects and cancer services
- join our Steering Group. The group helps to plan the work we do



Is there another way you would like to be involved? Please tell us.

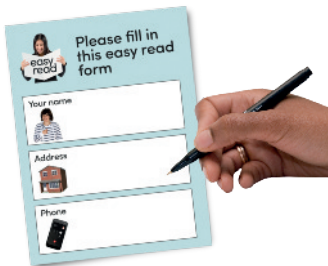
How much time will it take?



We will tell you how much time each activity takes. You can say whether you want to do it.

You can join when you want and stop helping us when you want.

How do I get involved?



Fill in the form on the next page and send it back to us.



Sue Newell,
Wessex Voices,
Help and Care,
896 Old Christchurch Road
Bournemouth
BH6 7DL



You can also email, text or phone to let us know how you want to get involved.

Email: wessexvoices2@helpandcare.org.uk

Phone/text: 07595 424198

Form to join Wessex Cancer Alliance Patient, Carer and Public Involvement Network



If you would like to be involved in Wessex Cancer Alliance Patient, Carer and Public Involvement Network, fill in this form.



Name: _____



Telephone Number: _____



Address: _____



Email Address: _____

What is the best way to contact you? (Please tick 1 box)



Telephone



Post



E-Mail



Why do you want to be involved?




How do you want to be involved?



Would you like to join Wessex Cancer Alliance's Patient, Carer and Public Involvement Steering Group?



Yes



No



Not sure



If you are **not sure** would you like more information about it?



Yes



No



How can we help you be involved?



Easy read information



Paying expenses

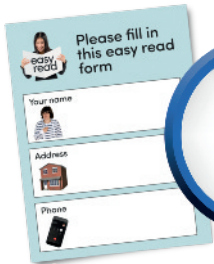


Help getting online



Other

Please write how here:



Agreement

By sending us this form you are saying we can contact you and store your information.



You can stop at anytime. All you need to do is tell us.



Please tick this box to agree Wessex Voices, hosted by Help and Care can:

- contact me
- store my information on their system

Contact Us



Address:

Sue Newell,
Wessex Voices,
Help and Care,
896 Old Christchurch Road
Bournemouth
BH6 7DL



Email: wessexvoices2@helpandcare.org.uk



Phone/text: 07595 424198



Easy Read Design by People First Forum.
November 2020.



Made with Photosymbols.



This document follows the European standards for making information easy to read and understand.

© European Easy-to-Read Logo: Inclusion Europe. More information at www.easy-to-read.eu